

2021 self-evaluation reports have been calculated using the teacher assessments provided by schools as part of the FFT End of Key Stage Assessment Service. ?

St Bonaventure's Catholic Primary School

2021

KS1

## Overview

### KS1 Attainment 2021 · Actual results

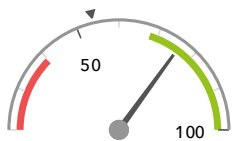
50 pupils

% Expected Standard + (Re, Wr, Ma)

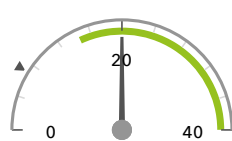
% Higher Standard (Re, Wr, Ma)

76%+

20%+



Significantly above the national average (54%) ◀



Significantly above the national average (7%) ◀

### KS1 Progress 2021 · Value Added

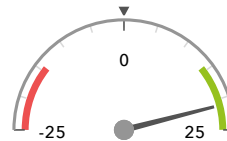
48 matched pupils

% Expected Standard + (Re, Wr, Ma)

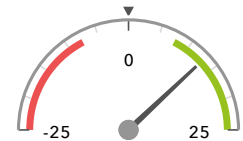
% Higher Standard (Re, Wr, Ma)

+21%+

+13%+



Significantly above the national average (0%) ◀



Significantly above the national average (0%) ◀

### KS1 higher and lower performing pupil groups 2021

Minimum group size: 5

	Higher performing	Lower performing
<b>Overall achievement</b> pupil progress	Higher attainers (16)+ First language not English (11) Female (22)+	Lower attainers (11)
<b>KS1 reading achievement</b> pupil progress	Higher attainers (16) Female (22) First language not English (11)	Lower attainers (11)
<b>KS1 writing achievement</b> pupil progress	Higher attainers (16) First language not English (11) Summer Term (16)	
<b>KS1 mathematics achievement</b> pupil progress	Summer Term (16) Middle attainers (21) First language not English (11)	Lower attainers (11)