

2021 self-evaluation reports have been calculated using the teacher assessments provided by schools as part of the FFT End of Key Stage Assessment Service. ?

St Bonaventure's Catholic Primary School

2021 KS2

# Overview

## KS2 Attainment 2021 · Actual results

57 pupils

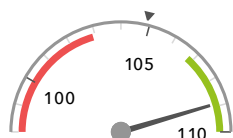
Average Scaled Score (Re, Ma)

% Expected standard+ (Re, Wr, Ma)

DFE

108.9 +

84% +



Significantly above the national average (104.9) ◀



Significantly above the national average (64%) ◀

## KS2 Progress 2021 · Value Added

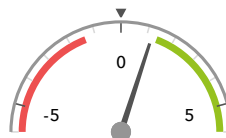
54 matched pupils

Average Scaled Score (Re, Ma)

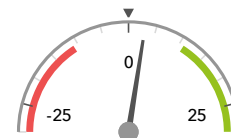
% Expected standard+ (Re, Wr, Ma)

+1.2

+3%



In line with the national average (0) ◀



In line with the national average (0%) ◀

## KS2 higher and lower performing pupil groups 2021

Minimum group size: 5

	Higher performing	Lower performing
<b>Overall achievement</b> pupil progress	Higher attainers (21) + Autumn Term (14) Spring Term (22)	FSM (6) FSM (in last 6 years) (6) Middle attainers (31)
<b>KS2 reading achievement</b> pupil progress	Higher attainers (21) + First language not English (9) White (44)	
<b>KS2 writing achievement</b> pupil progress	Higher attainers (21) Autumn Term (14) Spring Term (22)	Summer Term (18) FSM (6) FSM (in last 6 years) (6)
<b>KS2 mathematics achievement</b> pupil progress	Higher attainers (21) + Autumn Term (14) Spring Term (22)	First language not English (9) FSM (6) FSM (in last 6 years) (6)