

# 2018 KS1 School Dashboard

for governors & school leaders

Produce custom dashboards  
at [fftaspire.org](http://fftaspire.org)

## St Bonaventure's Catholic Primary School

LA City of Bristol DFE 8013417 Produced November 2018 Version 1

### What it is

Seven easy-to-use reports that help governors and school leaders to evaluate school performance using the latest 2018 DFE school performance indicators.

### What it tells you

- What are the strengths and areas for improvement in your school?
- How does attainment and pupil progress compare to the national average over the last three years?
- How are you performing in different subjects?
- Do you have any under-performing groups of pupils?
- How might the context of your school affect performance?
- How does pupil attendance compare to the national average?

### About the data shown

1 2 3

#### Actual results

Actual results for your school, using a range of measures such as averages and thresholds.



#### Gauges

These display headline indicators and whether actual results and pupils' progress are in line with, or significantly above or below, the national average.

ESTIMATED



1 2 3

#### Pupil progress

The value added progress that your pupils have made from one key stage to the next. FFT compares your actual results to the estimated results based on the progress of similar pupils nationally.



#### Statistical significance

Green plus signs and red minus signs highlight where either actual results or pupils' progress is significantly above or below the national average.



#### Trends

The dashboard analyses school performance over 3-5 years. Any significant year-on-year improvement is highlighted using an up arrow. Significant declines in performance are highlighted with a down arrow.



#### Strengths & weaknesses

These highlight key pupil groups and subjects where progress is above or below the national average.

### Working in partnership with



### Data sources

Generated from FFT Aspire which includes data sourced from the DfE (National Pupil Database) and data calculated by FFT. FFT is accredited as a DfE supplier to receive early access to ASP data. Headline performance indicators will be consistent with the DfE School Performance Tables and ASP.

# Overview

## KS1 Attainment 2018 · Actual results

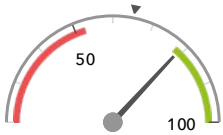
56 pupils

% Expected Standard + (Re, Wr, Ma)

% Higher Standard (Re, Wr, Ma)

79%+

21%+



Significantly above the national average (65%) ◀



Significantly above the national average (12%) ◀

## KS1 Progress 2018 · Value Added

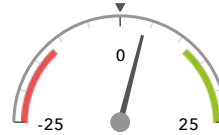
53 matched pupils

% Expected Standard + (Re, Wr, Ma)

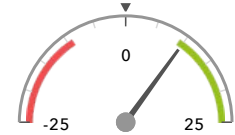
% Higher Standard (Re, Wr, Ma)

+4%

+10%+



In line with the national average (0%) ◀



Significantly above the national average (0%) ◀

## KS1 higher and lower performing pupil groups 2018

	Higher performing	Lower performing
<b>Overall achievement</b> pupil progress	Higher attainers (28) ↓ First language not English (12) Spring Term (19)	Lower attainers (9) Summer Term (21)
<b>KS1 reading achievement</b> pupil progress	Higher attainers (28) Autumn Term (13) First language not English (12)	Lower attainers (9) Middle attainers (16) Summer Term (21)
<b>KS1 writing achievement</b> pupil progress	Higher attainers (28) Autumn Term (13) Spring Term (19)	Lower attainers (9)
<b>KS1 mathematics achievement</b> pupil progress	First language not English (12) Middle attainers (16) Higher attainers (28)	Lower attainers (9)

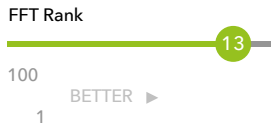
# Attainment & progress

## KS1 Attainment 2018

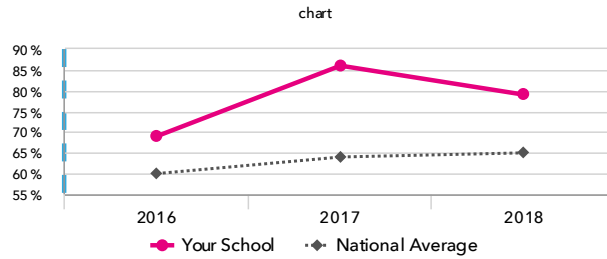
56 pupils

% Expected Standard + (Re, Wr, Ma)

**79%+**



Significantly above the national average (65%)

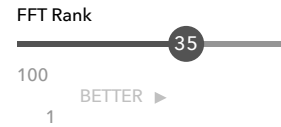


## KS1 Progress 2018

53 matched pupils

% Expected Standard + (Re, Wr, Ma)

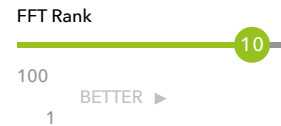
**+4%**



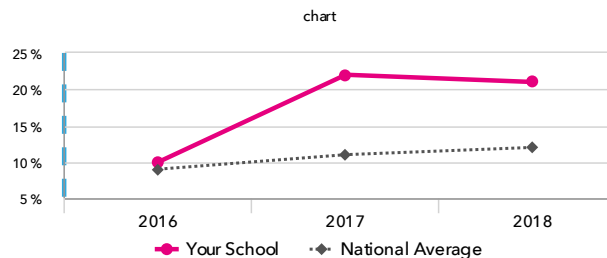
In line with the national average (0%)

% Higher Standard (Re, Wr, Ma)

**+10%+**

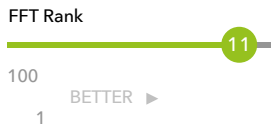


Significantly above the national average (0%)



% Higher Standard (Re, Wr, Ma)

**21%+**



Significantly above the national average (12%)

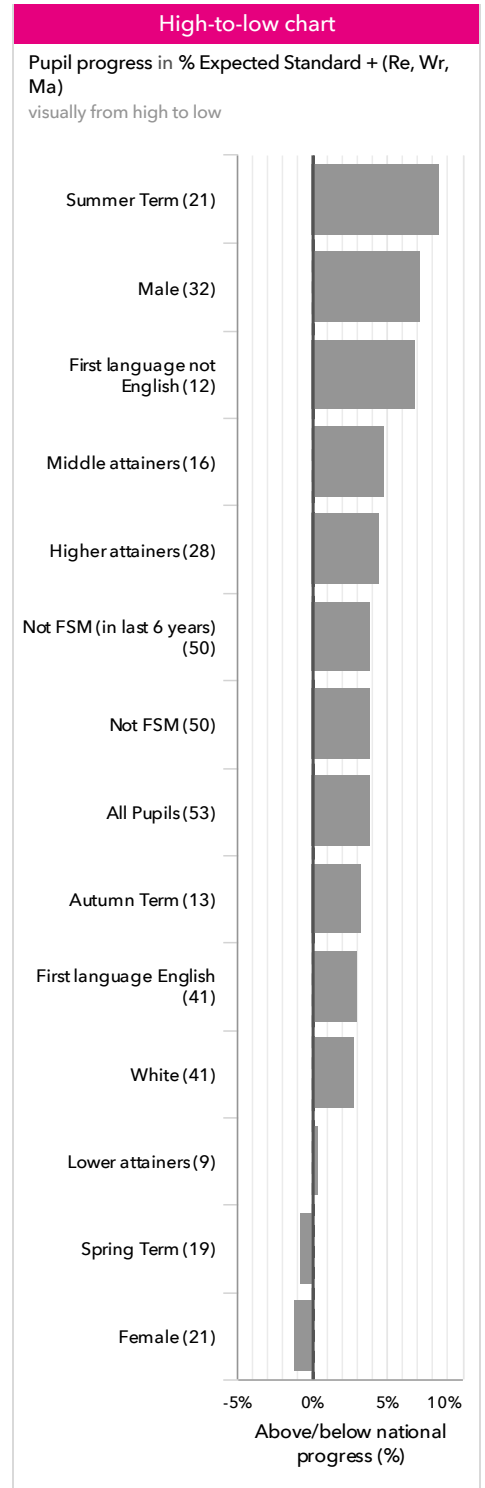
## KS1 performance summary

	Actual results			Pupil progress		
	2016	2017	2018	2016	2017	2018
Number of Pupils / % Matched	59	59	56	97%	98%	95%
% Expected Standard + (Re, Wr, Ma)	69%	86% <b>+</b> ↑	79% <b>+</b>	+4%	+12% <b>+</b>	+4%
% Higher Standard (Re, Wr, Ma)	10%	22% <b>+</b>	21% <b>+</b>	+1%	+11% <b>+</b>	+10% <b>+</b>
% Expected Standard + Reading	81%	97% <b>+</b>	79%	+1%	+11% <b>+</b>	-5%
% Higher Standard Reading	36% <b>+</b>	42% <b>+</b>	36%	+11%	+14% <b>+</b>	+7%
% Expected Standard + Writing	71%	90% <b>+</b> ↑	84% <b>+</b>	+1%	+11% <b>+</b>	+6%
% Higher Standard Writing	14%	25% <b>+</b>	21%	-0%	+10% <b>+</b>	+6%
% Expected Standard + Maths	88% <b>+</b>	92% <b>+</b>	89% <b>+</b>	+10%	+7%	+5%
% Higher Standard Maths	32% <b>+</b>	32% <b>+</b>	36% <b>+</b>	+14% <b>+</b>	+9%	+9%
% Level 2+ (Re, Wr, Ma)	-	-	-	-	-	-
% Level 2B+ (Re, Wr, Ma)	-	-	-	-	-	-
% Level 3+ (Re, Wr, Ma)	-	-	-	-	-	-
Average Point Score (Re, Wr, Ma)	-	-	-	-	-	-

# Pupil groups

## KS1 Pupil groups performance 2018

	Pupils	Actual results		Pupil progress		
		% Expected Standard + (Re, Wr, Ma)	% Higher Standard (Re, Wr, Ma)	% Expected Standard + (Re, Wr, Ma)	% Higher Standard (Re, Wr, Ma)	
<b>Summary</b>	All Pupils	56	79% <span style="color: green;">+</span>	21% <span style="color: green;">+</span>	+4%	+10% <span style="color: green;">+</span>
<b>Gender</b>	Male	33	82% <span style="color: green;">+</span>	24% <span style="color: green;">+</span>	+7%	+11%
	Female	23	74%	17%	-1%	+8%
<b>Prior Attainment</b>	Higher attainers	28	96%	39%	+4%	+18% <span style="color: green;">+</span>
	Middle attainers	16	81%	6%	+5%	+1%
	Lower attainers	9	22%	0%	+0%	-0%
<b>Pupil Premium</b>	FSM (in last 6 years)	3	67%	33%	+3%	+25%
	Not FSM (in last 6 years)	52	81%	21%	+4%	+9%
<b>FSM</b>	FSM	3	67%	33%	+3%	+25%
	Not FSM	52	81%	21%	+4%	+9%
<b>Term of Birth</b>	Summer Term	22	77%	5%	+8%	-1%
	Spring Term	21	76%	24%	-1%	+15%
	Autumn Term	13	85%	46% <span style="color: green;">+</span>	+3%	+20%
<b>SEN Group</b>	SEN Support	2	50%	0%	+3%	-2%
	EHC Plan	1	0%	0%	-3%	-0%
<b>EAL</b>	First language not English	13	85%	23%	+7%	+7%
	First language English	42	79%	21%	+3%	+11% <span style="color: green;">+</span>
<b>Ethnicity</b>	White	41	78%	24% <span style="color: green;">+</span>	+3%	+10%
	Black Caribbean	2	50%	0%	-4%	-5%
	Black African	3	67%	0%	+3%	-5%
	Indian	3	100%	67%	+13%	+56%
	Other Asian	2	100%	0%	+7%	-12%
	Any Other	3	100%	0%	+5%	-20%
	Unknown	1	100%	0%	+27%	-4%
	No Ethnicity Data	1	0%	0%	-	-



# Subjects

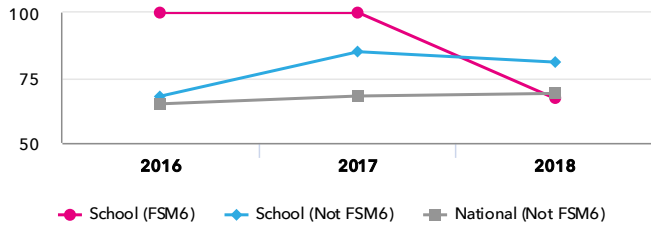
## KS1 subject performance 2018

	Actual results			Pupil progress			Actual results over time		
	2016	2017	2018	2016	2017	2018			
Number of Pupils / % Matched	59	59	56	97%	98%	95%			
<b>Reading</b>									
% Expected Standard +	81%	97% <span style="color: green;">+</span>	79%	+1%	+11% <span style="color: green;">+</span>	-5%	% Expected Standard + Reading chart 		
% Higher Standard	36% <span style="color: green;">+</span>	42% <span style="color: green;">+</span>	36%	+11%	+14% <span style="color: green;">+</span>	+7%			
% Level 2+	-	-	-	-	-	-			
% Level 2B+	-	-	-	-	-	-			
% Level 3+	-	-	-	-	-	-			
Average Point Score	-	-	-	-	-	-			
<b>Writing</b>									
% Expected Standard +	71%	90% <span style="color: green;">+</span> <span style="color: green;">↑</span>	84% <span style="color: green;">+</span>	+1%	+11% <span style="color: green;">+</span>	+6%	% Expected Standard + Writing chart 		
% Higher Standard	14%	25% <span style="color: green;">+</span>	21%	-0%	+10% <span style="color: green;">+</span>	+6%			
% Level 2+	-	-	-	-	-	-			
% Level 2B+	-	-	-	-	-	-			
% Level 3+	-	-	-	-	-	-			
Average Point Score	-	-	-	-	-	-			
<b>Maths</b>									
% Expected Standard +	88% <span style="color: green;">+</span>	92% <span style="color: green;">+</span>	89% <span style="color: green;">+</span>	+10%	+7%	+5%	% Expected Standard + Maths chart 		
% Higher Standard	32% <span style="color: green;">+</span>	32% <span style="color: green;">+</span>	36% <span style="color: green;">+</span>	+14% <span style="color: green;">+</span>	+9%	+9%			
% Level 2+	-	-	-	-	-	-			
% Level 2B+	-	-	-	-	-	-			
% Level 3+	-	-	-	-	-	-			
Average Point Score	-	-	-	-	-	-			
<b>Science</b>									
% Expected Standard +	97% <span style="color: green;">+</span>	97% <span style="color: green;">+</span>	91%	-	-	-	% Expected Standard + Science chart 		
% Level 2+	-	-	-	-	-	-			
% Level 3+	-	-	-	-	-	-			
Average Point Score	-	-	-	-	-	-			

# Disadvantaged pupils

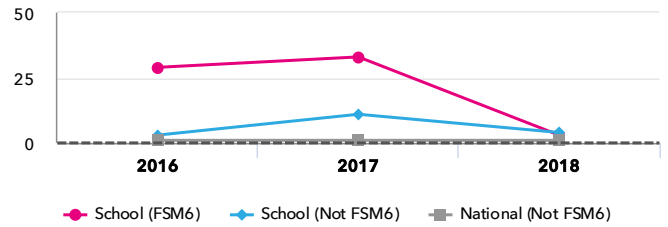
## KS1 attainment for disadvantaged pupils 2018

% Expected Standard + (Re, Wr, Ma)

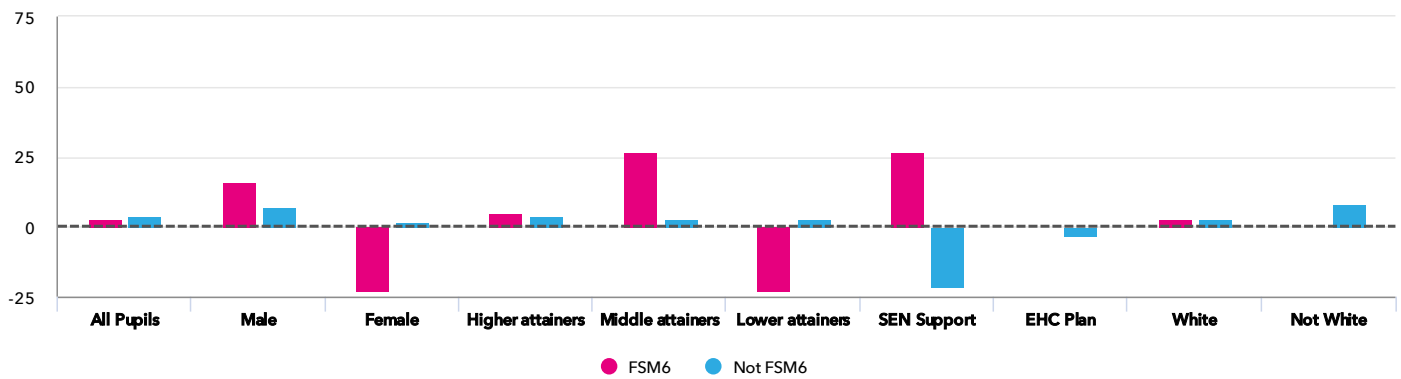


## KS1 progress for disadvantaged pupils 2018

% Expected Standard + (Re, Wr, Ma)



## Progress gap % Expected Standard + (Re, Wr, Ma)

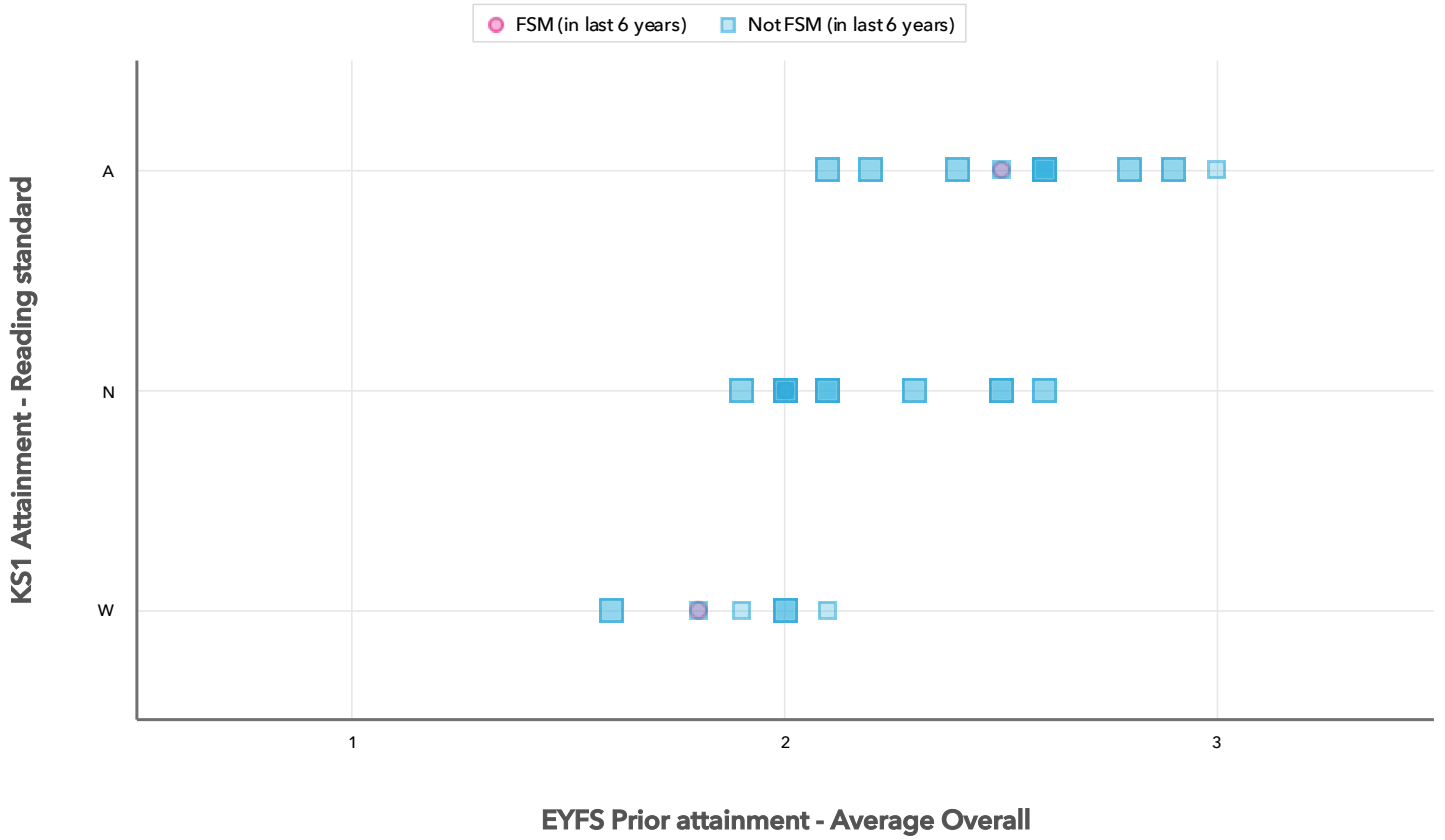


## Attainment & progress

Pupils		Attainment					Progress		
		FSM6	Not FSM6	% Expected Standard + (Re, Wr, Ma)			% Expected Standard + (Re, Wr, Ma)		
				FSM6	Not FSM6	Gap	FSM6	Not FSM6	Gap
<b>Summary</b>	All Pupils	3	52	67%	81%	-14%	3%	4%	-1%
<b>Gender</b>	Male	2	31	100%	81%	19%	16%	7%	9%
	Female	1	21	0%	81%	-81%	-23%	0%	-23%
<b>Prior Attainment</b>	Higher attainers	1	27	100%	96%	4%	5%	4%	1%
	Middle attainers	1	15	100%	80%	20%	27%	3%	24%
	Lower attainers	1	8	0%	25%	-25%	-23%	3%	-26%
<b>SEN Group</b>	SEN Support	1	1	100%	0%	100%	27%	-21%	48%
	EHC Plan	-	1	-	0%	-	-	-3%	-
<b>Ethnic Group</b>	White	3	38	67%	79%	-12%	3%	3%	0%
	Not White	-	14	-	86%	-	-	8%	-

# Scatterplot

KS1 Pupil scatterplot 2018 56 pupils highlighted by Pupil Premium



## Context

## Context · Year 2 · 2017 / 2018

		Pupils	Proportion	
			School	National
<b>Summary</b>	All Pupils	56	100%	100%
<b>Gender</b>	Male	33	59%	51%
	Female	23	41%	49%
<b>Prior Attainment</b>	Higher attainers	28	50%	35%
	Middle attainers	16	29%	32%
	Lower attainers	9	16%	29%
<b>Pupil Premium</b>	FSM (in last 6 years)	3	5%	20%
	Not FSM (in last 6 years)	52	93%	79%
<b>FSM</b>	FSM	3	5%	14%
	Not FSM	52	93%	86%
<b>Term of Birth</b>	Summer Term	22	39%	34%
	Spring Term	21	38%	32%
	Autumn Term	13	23%	34%
<b>SEN Group</b>	SEN Support	2	4%	12%
	EHC Plan	1	2%	2%
<b>EAL</b>	First language not English	13	23%	20%
	First language English	42	75%	79%
<b>Ethnicity</b>	White	41	73%	74%
	Black Caribbean	2	4%	3%
	Black African	3	5%	5%
	Indian	3	5%	3%
	Other Asian	2	4%	3%
	Any Other	3	5%	4%
	Unknown	1	2%	1%
	No Ethnicity Data	1	2%	0%

## Absence · Year 2 · 2017 / 2018

		Pupils	Absence		Persistent absentees	
			School	National	School	National
<b>Summary</b>	All Pupils	56	3%	4%	5%	8%
<b>Gender</b>	Male	33	3%	4%	3%	9%
	Female	23	4%	4%	9%	8%
<b>Prior Attainment</b>	Higher attainers	28	3%	3%	0%	4%
	Middle attainers	16	3%	4%	6%	7%
	Lower attainers	9	4%	6%	11%	14%
<b>Pupil Premium</b>	FSM (in last 6 years)	3	10%	6%	67%	17%
	Not FSM (in last 6 years)	52	3%	4%	2%	6%
<b>FSM</b>	FSM	3	10%	6%	67%	19%
	Not FSM	52	3%	4%	2%	7%
<b>Term of Birth</b>	Summer Term	22	3%	4%	5%	9%
	Spring Term	21	3%	4%	5%	8%
	Autumn Term	13	3%	4%	8%	8%
<b>SEN Group</b>	SEN Support	2	8%	6%	50%	15%
	EHC Plan	1	3%	8%	0%	26%
<b>EAL</b>	First language not English	13	3%	5%	0%	10%
	First language English	42	3%	4%	7%	8%
<b>Ethnicity</b>	White	41	3%	4%	5%	8%
	Black Caribbean	2	3%	5%	0%	13%
	Black African	3	3%	3%	0%	6%
	Indian	3	3%	4%	0%	7%
	Other Asian	2	3%	5%	0%	9%
	Any Other	3	9%	5%	33%	10%
	Unknown	1	1%	5%	0%	11%
	No Ethnicity Data	1	-	11%	-	40%