

# Self-evaluation Summary Dashboard

Produce custom dashboards  
at [fftaspire.org](http://fftaspire.org)

## St Bonaventure's Catholic Primary School

LA City of Bristol DFE 8013417 Produced November 2019

### Reports

- Overview
- Attainment & Progress
- Pupil groups
- Subjects
- Disadvantaged pupils
- Scatterplot
- Context

### What it tells you

- What are the strengths and weaknesses of your school?
- How does attainment and pupil progress at your school compare to the national average?
- How are you performing in different subjects?
- Do you have any under-performing groups of pupils?
- How might the context of your school affect performance?
- How does pupil attendance compare to the national average?

### About the data shown



#### Filters

No filters chosen (all pupils included)  
You can use filters to view a subset of pupils



#### Indicators

% Expected Standard + (Re, Wr, Ma)  
% Higher Standard (Re, Wr, Ma)



#### Value added

Achievement is compared with similar pupils nationally. The FFT VA model uses prior attainment, gender and month of birth as a starting point.

# Overview

## KS1 Attainment 2019 · Actual results

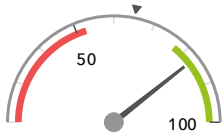
60 pupils

% Expected Standard + (Re, Wr, Ma)

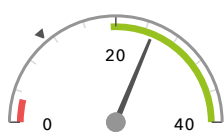
% Higher Standard (Re, Wr, Ma)

83%+

25%+



Significantly above the national average (65%) ◀



Significantly above the national average (11%) ◀

## KS1 Progress 2019 · Value Added

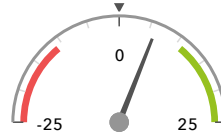
59 matched pupils

% Expected Standard + (Re, Wr, Ma)

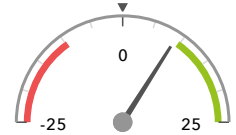
% Higher Standard (Re, Wr, Ma)

+6%

+9%



In line with the national average (0%) ◀



In line with the national average (0%) ◀

## KS1 higher and lower performing pupil groups 2019

	Higher performing	Lower performing
<b>Overall achievement</b> pupil progress	Middle attainers (26) Higher attainers (24) Female (31)	Lower attainers (9) - Male (28)
<b>KS1 reading achievement</b> pupil progress	Middle attainers (26) Female (31) Higher attainers (24)	Lower attainers (9) Black African (5) Male (28)
<b>KS1 writing achievement</b> pupil progress	Higher attainers (24) Female (31) Spring Term (16)	Lower attainers (9)
<b>KS1 mathematics achievement</b> pupil progress	Higher attainers (24) Black African (5) Spring Term (16)	Lower attainers (9) Other Asian (5) Summer Term (25)

# Attainment & progress

## KS1 Attainment 2019

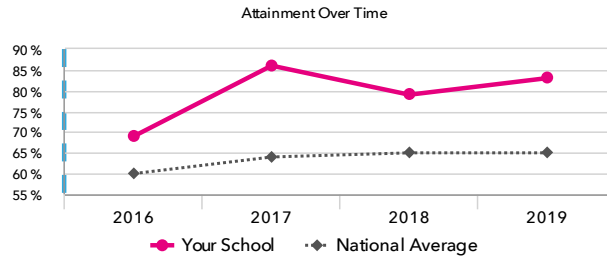
60 pupils

% Expected Standard + (Re, Wr, Ma)

83%+



Significantly above the national average (65%)



## KS1 Progress 2019

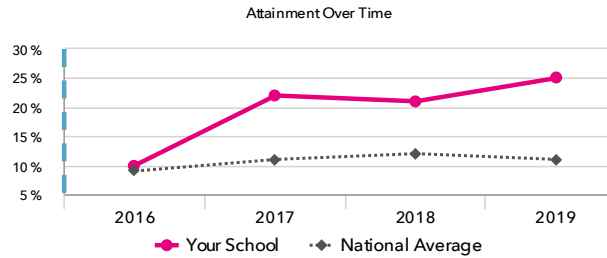
59 matched pupils

% Expected Standard + (Re, Wr, Ma)

+6%



In line with the national average (0%)



% Higher Standard (Re, Wr, Ma)

+9%



In line with the national average (0%)

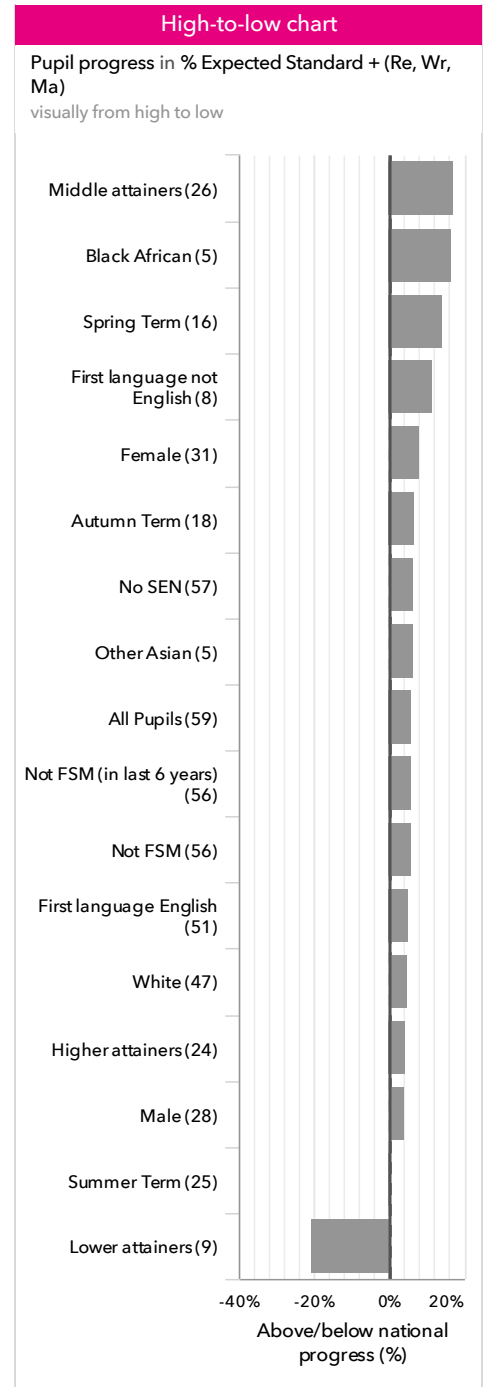
## KS1 performance summary

	Actual results			Pupil progress		
	2017	2018	2019	2017	2018	2019
Number of Pupils / % Matched	59	56	60	98%	95%	98%
% Expected Standard + (Re, Wr, Ma)	86% $\uparrow$	79% $\oplus$	83% $\oplus$	+12% $\oplus$	+4%	+6%
% Higher Standard (Re, Wr, Ma)	22% $\oplus$	21% $\oplus$	25% $\oplus$	+11% $\oplus$	+10% $\oplus$	+9%
% Expected Standard + Reading	97% $\oplus$	79%	87% $\oplus$	+11% $\oplus$	-5%	+0%
% Higher Standard Reading	42% $\oplus$	36%	45% $\oplus$	+14% $\oplus$	+7%	+9%
% Expected Standard + Writing	90% $\uparrow$	84% $\oplus$	85% $\oplus$	+11% $\oplus$	+6%	+4%
% Higher Standard Writing	25% $\oplus$	21%	32% $\oplus$	+10%	+6%	+11% $\oplus$
% Expected Standard + Maths	92% $\oplus$	89% $\oplus$	87%	+7%	+5%	-0%
% Higher Standard Maths	32% $\oplus$	36% $\oplus$	37% $\oplus$	+9%	+9%	+7%

# Pupil groups

## KS1 Pupil groups performance 2019

	Pupils	Actual results		Pupil progress		
		% Expected Standard + (Re, Wr, Ma)	% Higher Standard (Re, Wr, Ma)	% Expected Standard + (Re, Wr, Ma)	% Higher Standard (Re, Wr, Ma)	
<b>Summary</b>	All Pupils	60	83% <span style="color: green;">+</span>	25% <span style="color: green;">+</span>	+6%	+9%
<b>Gender</b>	Male	28	75%	18%	+4%	+4%
	Female	32	91% <span style="color: green;">+</span>	31% <span style="color: green;">+</span>	+8%	+13%
<b>Prior Attainment</b>	Higher attainers	24	100%	58% <span style="color: green;">+</span>	+4%	+22% <span style="color: green;">+</span>
	Middle attainers	26	92%	4%	+17%	-0%
	Lower attainers	9	11%	0%	-21%	-0%
<b>Pupil Premium</b>	FSM (in last 6 years)	3	67%	33%	+9%	+30%
	Not FSM (in last 6 years)	57	84% <span style="color: green;">+</span>	25% <span style="color: green;">+</span>	+6%	+8%
<b>FSM</b>	FSM	3	67%	33%	+9%	+30%
	Not FSM	57	84% <span style="color: green;">+</span>	25% <span style="color: green;">+</span>	+6%	+8%
<b>Term of Birth</b>	Summer Term	25	68%	24% <span style="color: green;">+</span>	+0%	+12%
	Spring Term	17	94% <span style="color: green;">+</span>	24%	+15%	+10%
	Autumn Term	18	94%	28%	+7%	+3%
<b>SEN Group</b>	SEN Support	1	100%	100%	+2%	+41%
	EHC Plan	1	0%	0%	-8%	-0%
	No SEN	58	84%	24% <span style="color: green;">+</span>	+6%	+8%
<b>EAL</b>	First language not English	8	88%	13%	+11%	-1%
	First language English	52	83% <span style="color: green;">+</span>	27% <span style="color: green;">+</span>	+5%	+10%
<b>Ethnicity</b>	White	48	81% <span style="color: green;">+</span>	27% <span style="color: green;">+</span>	+5%	+11%
	Black Caribbean	1	100%	0%	+27%	-4%
	Black African	5	100%	20%	+17%	+0%
	Other Asian	5	80%	0%	+6%	-11%
	Any Other	1	100%	100%	+3%	+61%



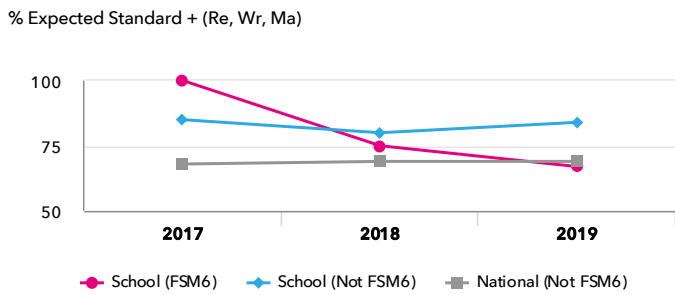
# Subjects

## KS1 subject performance 2019

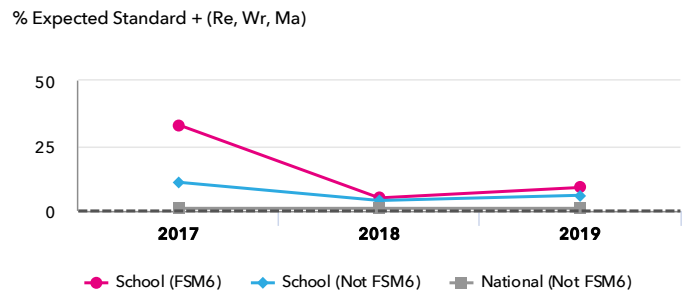
	Actual results			Pupil progress			Actual results over time		
	2017	2018	2019	2017	2018	2019			
Number of Pupils / % Matched	59	56	60	98%	95%	98%			
<b>Reading</b>									
% Expected Standard +	97% <span style="color: green;">+</span>	79%	87% <span style="color: green;">+</span>	+11% <span style="color: green;">+</span>	-5%	+0%			
% Higher Standard	42% <span style="color: green;">+</span>	36%	45% <span style="color: green;">+</span>	+14% <span style="color: green;">+</span>	+7%	+9%			
<b>Writing</b>									
% Expected Standard +	90% <span style="color: green;">+</span> <span style="color: green;">↑</span>	84% <span style="color: green;">+</span>	85% <span style="color: green;">+</span>	+11% <span style="color: green;">+</span>	+6%	+4%			
% Higher Standard	25% <span style="color: green;">+</span>	21%	32% <span style="color: green;">+</span>	+10%	+6%	+11% <span style="color: green;">+</span>			
<b>Maths</b>									
% Expected Standard +	92% <span style="color: green;">+</span>	89% <span style="color: green;">+</span>	87%	+7%	+5%	-0%			
% Higher Standard	32% <span style="color: green;">+</span>	36% <span style="color: green;">+</span>	37% <span style="color: green;">+</span>	+9%	+9%	+7%			
<b>Science</b>									
% Expected Standard +	97% <span style="color: green;">+</span>	91%	92%	-	-	-			

# Disadvantaged pupils

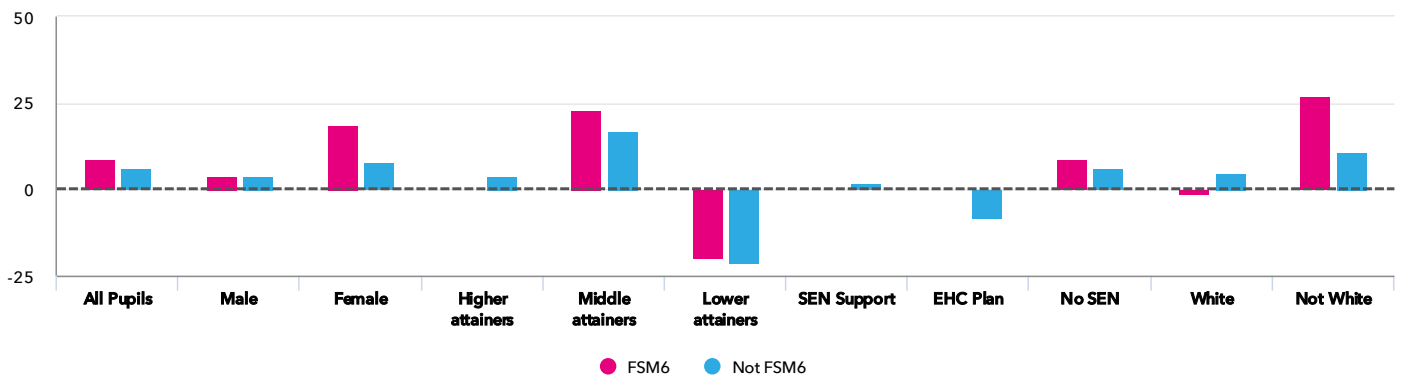
## KS1 attainment for disadvantaged pupils 2019



## KS1 progress for disadvantaged pupils 2019



## Progress gap % Expected Standard + (Re, Wr, Ma)

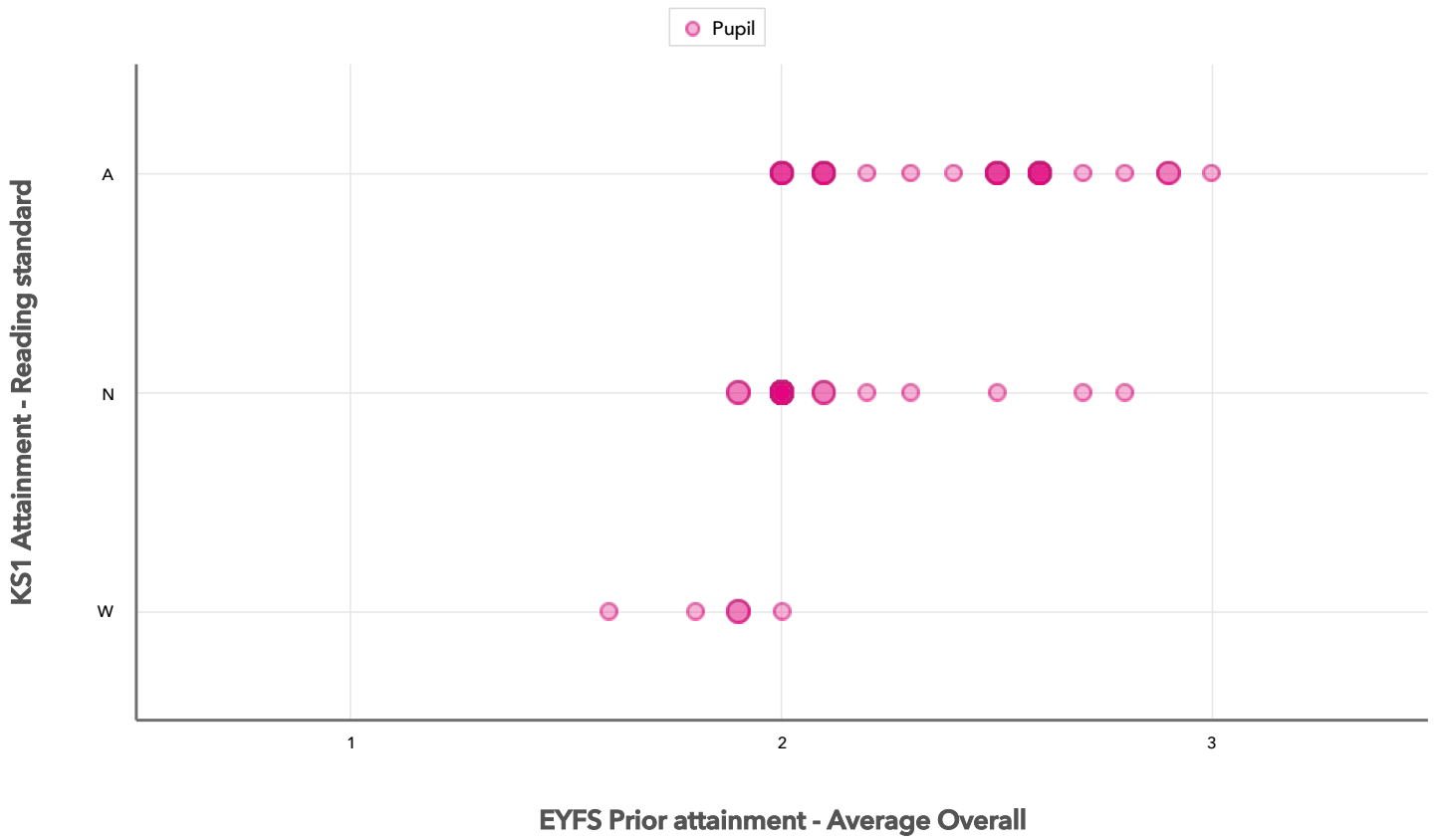


## Attainment & progress

Pupils		Attainment					Progress		
		FSM6	Not FSM6	% Expected Standard + (Re, Wr, Ma)			% Expected Standard + (Re, Wr, Ma)		
				FSM6	Not FSM6	Gap	FSM6	Not FSM6	Gap
<b>Summary</b>	All Pupils	3	57	67%	84% <span style="color: green;">+</span>	-17%	9%	6%	3%
<b>Gender</b>	Male	2	26	50%	77%	-27%	4%	4%	0%
	Female	1	31	100%	90%	10%	19%	8%	11%
<b>Prior Attainment</b>	Higher attainers	-	24	-	100%	-	-	4%	-
	Middle attainers	2	24	100%	92%	8%	23%	17%	6%
	Lower attainers	1	8	0%	13%	-13%	-20%	-21%	1%
<b>SEN Group</b>	SEN Support	-	1	-	100%	-	-	2%	-
	EHC Plan	-	1	-	0%	-	-	-8%	-
	No SEN	3	55	67%	85%	-18%	9%	6%	3%
<b>Ethnic Group</b>	White	2	46	50%	83%	-33%	-1%	5%	-6%
	Not White	1	11	100%	91%	9%	27%	11%	16%

# Scatterplot

KS1 Pupil scatterplot 2019 60 pupils highlighted by All pupils



# Context

## Context · Year 2

		Pupils	Comparative profile 2018 / 2019		Absence during Key Stage 1		Persistent absence during Key Stage 1	
		School	School	National	School	National	School	National
<b>Summary</b>	All Pupils	60	100%	100%	-	-	-	-
<b>Gender</b>	Male	28	47%	51%	-	-	-	-
	Female	32	53%	49%	-	-	-	-
<b>Prior Attainment</b>	Higher attainers	24	40%	35%	-	-	-	-
	Middle attainers	26	43%	34%	-	-	-	-
	Lower attainers	9	15%	28%	-	-	-	-
<b>Pupil Premium</b>	FSM (in last 6 years)	3	5%	21%	-	-	-	-
	Not FSM (in last 6 years)	57	95%	79%	-	-	-	-
<b>FSM</b>	FSM	3	5%	16%	-	-	-	-
	Not FSM	57	95%	84%	-	-	-	-
<b>Term of Birth</b>	Summer Term	25	42%	34%	-	-	-	-
	Spring Term	17	28%	33%	-	-	-	-
	Autumn Term	18	30%	34%	-	-	-	-
<b>SEN Group</b>	SEN Support	1	2%	13%	-	-	-	-
	EHC Plan	1	2%	2%	-	-	-	-
	No SEN	58	97%	85%	-	-	-	-
<b>EAL</b>	First language not English	8	13%	21%	-	-	-	-
	First language English	52	87%	79%	-	-	-	-
<b>Ethnicity</b>	White	48	80%	74%	-	-	-	-
	Black Caribbean	1	2%	3%	-	-	-	-
	Black African	5	8%	5%	-	-	-	-
	Other Asian	5	8%	3%	-	-	-	-
	Any Other	1	2%	4%	-	-	-	-